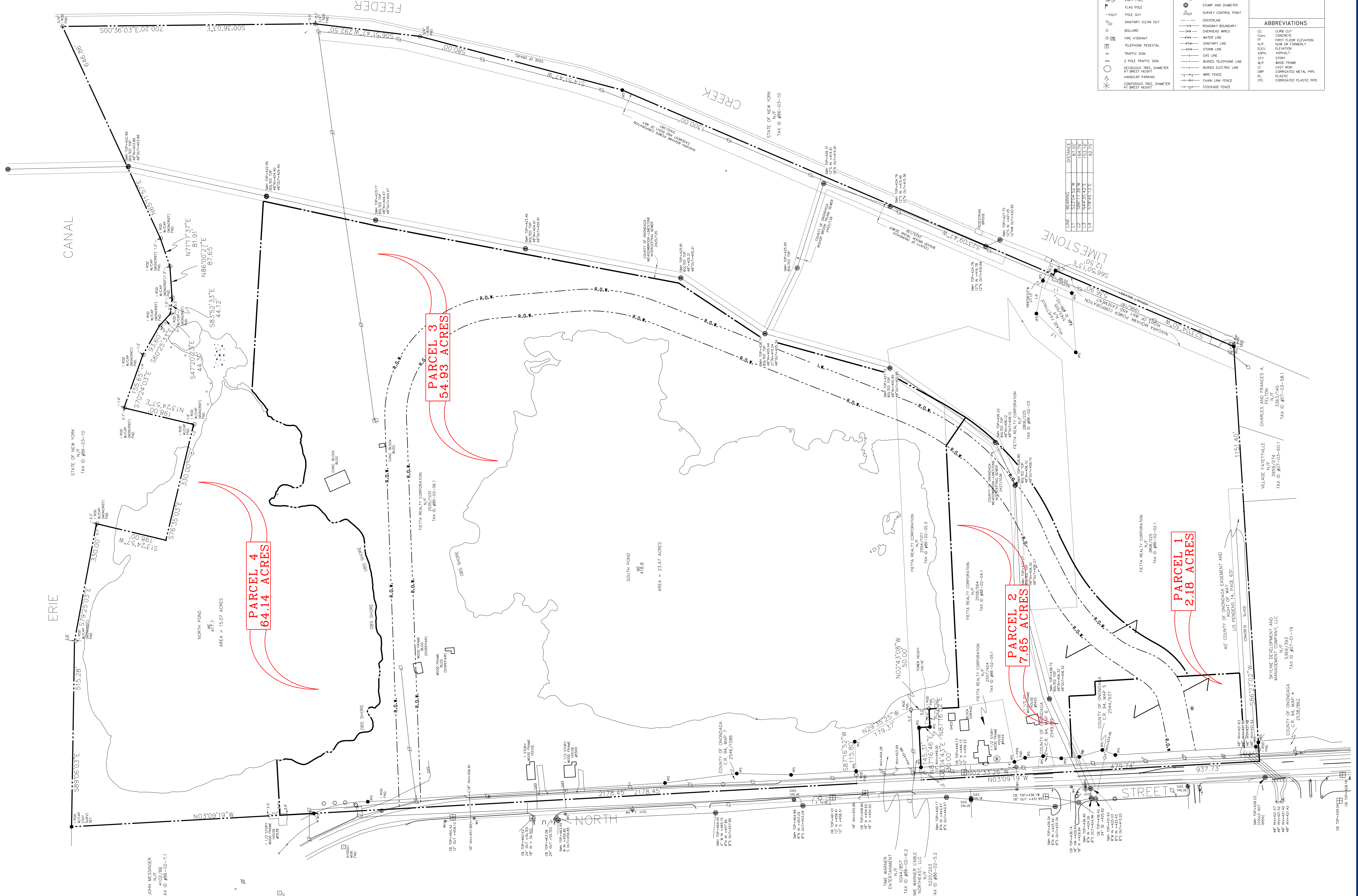


NORTH AT 76°35' MERIDIAN
OF WEST LONGITUDE

LEGEND	
⊕	IRON PIPE FOUND
⊙	IRON ROD SET W/ CONE CAP
▽	INVERT ELEVATION
⊕	UTILITY POLE
⊕	WATER VALVE
⊕	SERVICE WATER VALVE
⊕	YARD LIGHT
⊕	FLAG POLE
⊕	POLE GLY
⊕	SANITARY CLEAN OUT
⊕	BOLLARD
⊕	TELEPHONE PEDESTAL
⊕	TRAFFIC SIGN
⊕	2 POLE TRAFFIC SIGN
⊕	ODDIOUS TREE, DIAMETER AT BREAST HEIGHT
⊕	HANDICAP PARKING
⊕	CONFEROUS TREE, DIAMETER AT BREAST HEIGHT
⊕	SANITARY MANHOLE
⊕	WATER MANHOLE
⊕	ELECTRIC MANHOLE
⊕	TELEPHONE MANHOLE
⊕	UNKNOWN TYPE MANHOLE
⊕	GAS VALVE
⊕	STORM CATCH BASIN
⊕	STAMP AND DIAMETER
⊕	SURVEY CONTROL POINT
---	CENTERLINE
---	ROADWAY BOUNDARY
---	OVERHEAD WIRES
---	WATER LINE
---	SANITARY LINE
---	STORM LINE
---	GAS LINE
---	BURIED TELEPHONE LINE
---	WIRE FENCE
---	CHAIN LINK FENCE
---	STOCKADE FENCE
⊕	WORKING WELL
⊕	CATCH BASIN
⊕	GASOLINE FUEL PUMP
⊕	TRAFFIC CONTROL BOX

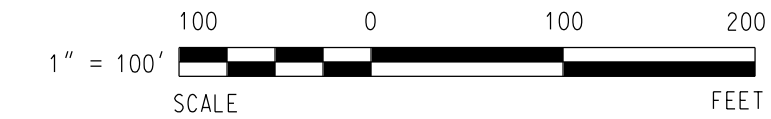
ABBREVIATIONS	
CC	CURB CUT
CONC.	CONCRETE
FT	FEET
N/F	NOT FOR CONVEYANCE
ELEV.	ELEVATION
ASPH.	ASPHALT
STY.	STORM
W/F	WOOD FRAME
CAST IRON	CAST IRON
CP	CORRUGATED METAL PIPE
PL	PLASTIC
CP	CORRUGATED PLASTIC PIPE

LINE	BEARING	DISTANCE
1	S23°04'25"W	87.00
2	S28°14'25"W	114.76
3	S28°14'25"W	124.76
4	S28°14'25"W	124.76
5	S28°14'25"W	124.76



JOHN MESSINGER
4102/846
TAX ID #86-02-71

PRELIMINARY SUBDIVISION PLAN



DATE	REVISIONS

NOTE: NO ALTERATION PERMITTED HEREON UNLESS IT IS PRINTED UNDER ACTUAL LOG SUBSTITUTION 1 OF THE NEW YORK ZONING LOCALITY LAW.

TWIN LAKES MULTI-USE DEVELOPMENT
 CLIENT: TWIN SHORES PROPERTIES, LLC
 LOCATION: N. BURDICK STREET, TOWN OF MANLIUS, ONONDAGA COUNTY, NEW YORK

PROJECT: PRELIMINARY SUBDIVISION PLAN

PROJECT No.: 2021054
 SCALE: 1" = 100'
 DATE: SKD
 ENG'D BY: NAR/DK.C
 DRAWN BY: JED
 CHECKED BY: JED

SHEET NO. **SP-1**