

TOWN OF MANLIUS SUBDIVISION DEVELOPMENT

- ZONING
- TAX MAP #104-01-392 IS CURRENTLY ZONED RESTRICTED AGRICULTURE (RA) DISTRICTS.
 - THE FOLLOWING USES ARE PERMITTED IN RA DISTRICTS.
 - ANY USE PERMITTED IN RESIDENTIAL DISTRICT R-1, ACCORDING TO THE SAME RESTRICTIONS.
 - ANY USE PERMITTED IN RESIDENTIAL DISTRICT R-3, ACCORDING TO THE SAME RESTRICTIONS.

RA BULK REGULATIONS (16 LOT CONVENTIONAL PLAN)

MIN. FRONTAGE	N/A
MIN. LOT AREA	N/A
FRONT YARD SETBACK	40'-0"
SIDE YARD SETBACK	20'-0"
REAR YARD SETBACK	40'-0"

R1 ZONING BULK REGULATIONS

UTILIZE RESIDENTIAL (R1) DISTRICT ZONING CRITERIA FOR 16 LOT CONVENTIONAL PLAN LOTS.

MIN. FRONTAGE	150'-0"
MIN. LOT AREA	40,000 SF
FRONT YARD	40'-0"
SIDE YARD	20'-0"
REAR YARD	40'-0"

UTILIZED FOR STORMWATER AND SANITARY DESIGN

NOT FOR CONSTRUCTION
WOODLAND HILLS SUBDIVISION
5280 HOAG LANE, MANLIUS, NY

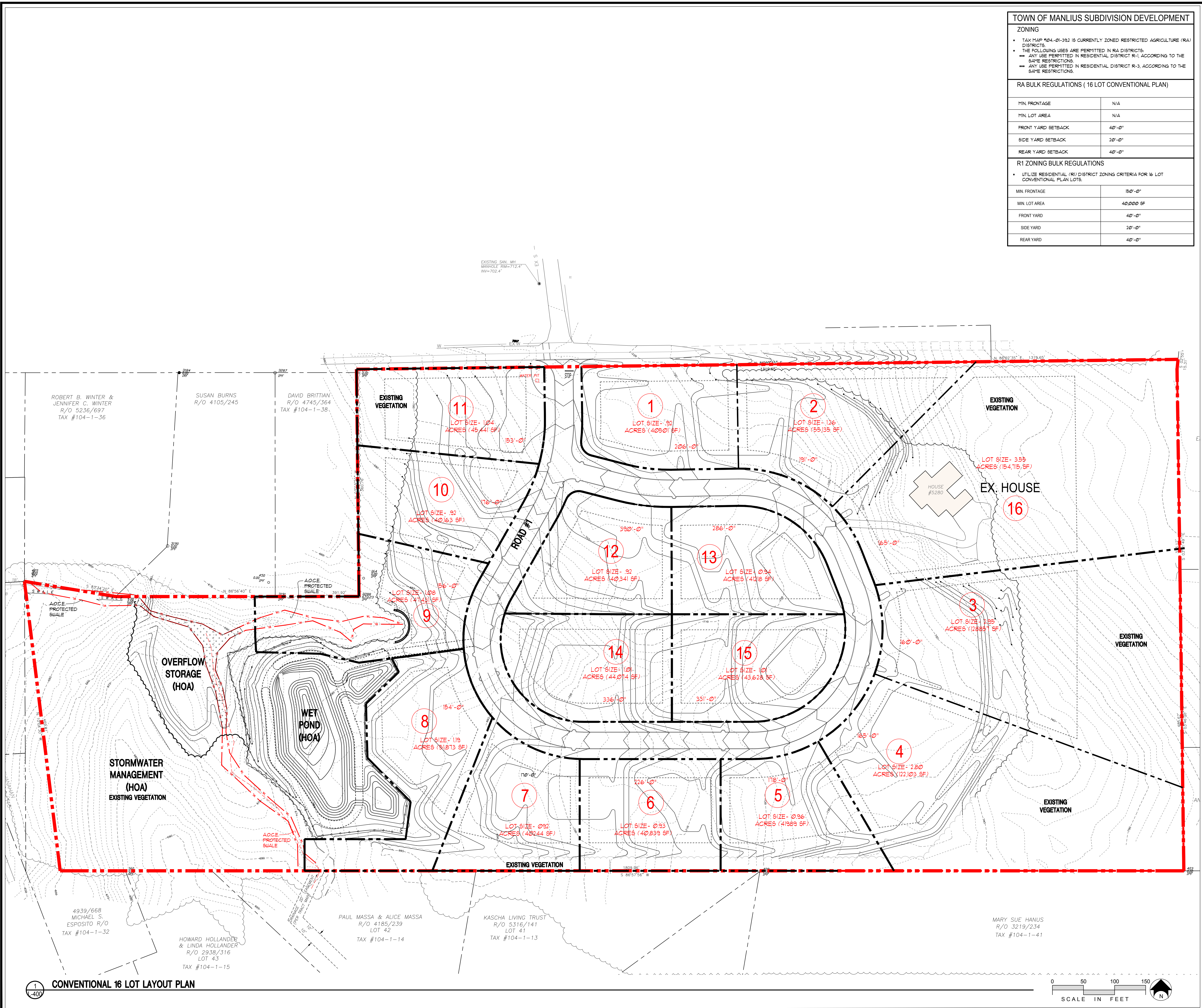
CLIENT:
HOAG ROAD PROPERTIES, LLC

ISSUED AND REVISIONS NOTIFICATION	Date	No. Rev.	Description

Drawn By: VER
Checked By: SF
KFA Proj. No.: 37020
Date: JULY 29, 2022
Scale: AS NOTED

LAYOUT PLAN

L-400



1 CONVENTIONAL 16 LOT LAYOUT PLAN

