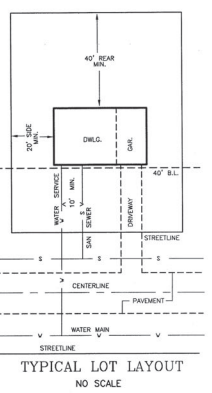
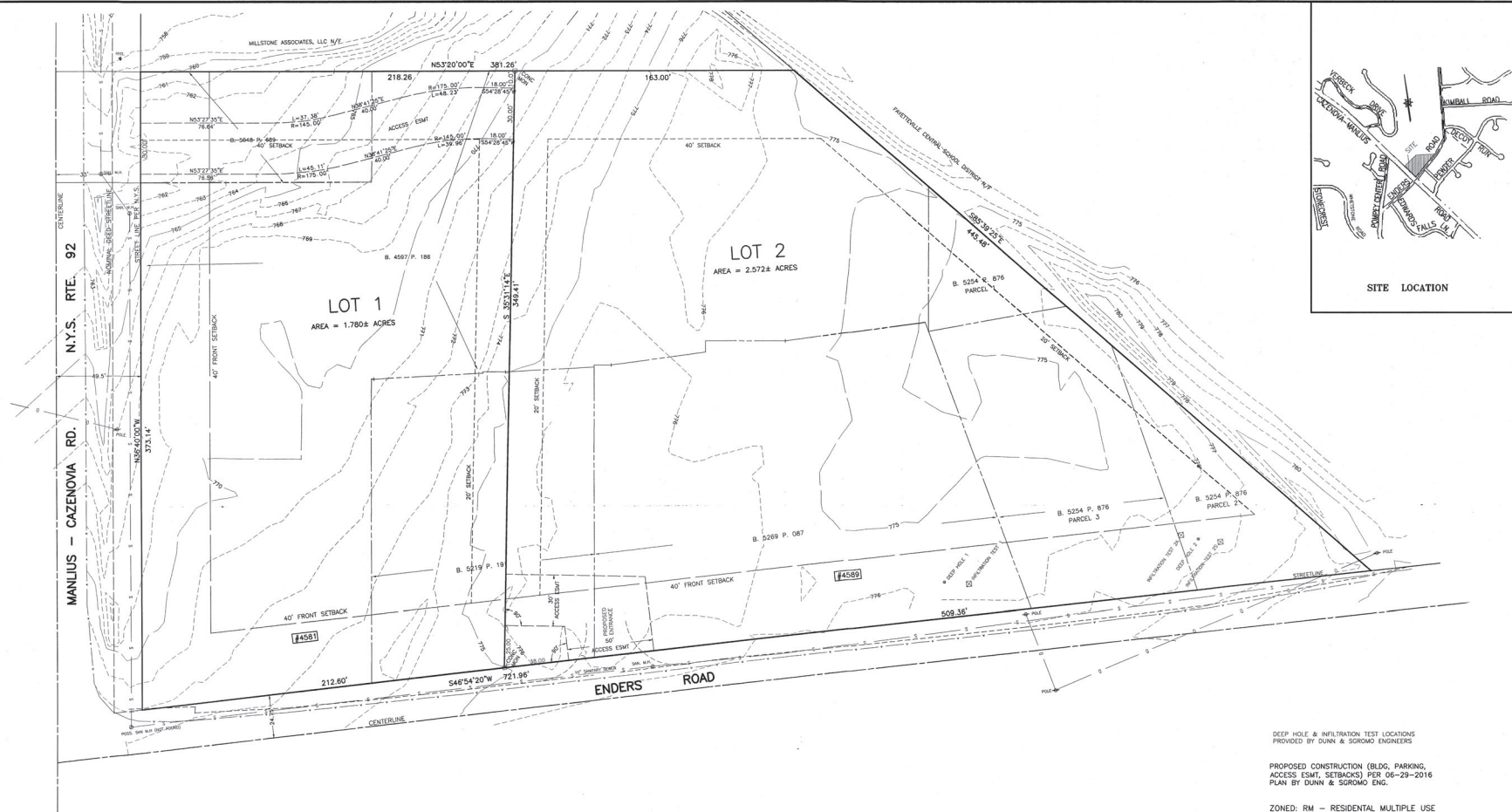


SITE LOCATION



DEEP HOLE & INFILTRATION TEST LOCATIONS PROVIDED BY DUNN & SPROMO ENGINEERS

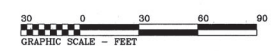
PROPOSED CONSTRUCTION (BLDG, PARKING, ACCESS ESMT, SETBACKS) PER 06-29-2016 PLAN BY DUNN & SPROMO ENG.

ZONED: RM - RESIDENTIAL MULTIPLE USE

EXISTING BUILDINGS/IMPROVEMENTS NOT SHOWN.

CONTOURS AT 1 FOOT INTERVALS ARE A SUBJECTIVE INTERPRETATION OF TOPOGRAPHY BASED ON AN INTERPOLATION OF ACTUAL ELEVATION DATUMS RELATED TO NAVD83 DATUM

TOTAL AREA = 4.352± ACRES



000XXXXX000 PENZOTTO MARKS (SHADLEY) ©20151119SUB-RJ.DWG

FINAL PLAN

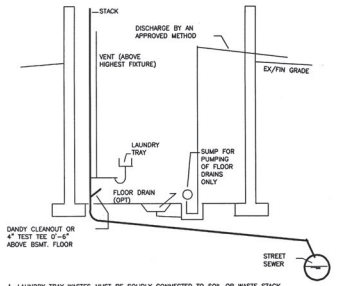
**PENZOTTO SUBDIVISION
PART OF LOT 98 - TOWN OF MANLIUS
ONONDAGA COUNTY, N. Y.**

L.D: 114-01-09	FILE: ROLL 114-1-13, BIN-2YY	B/P:
DATE: 11-19-2015	SCALE: 1" = 30'	
REVISIONS		
8 12-02-2016	ADDRESS, TOWN	6 8-10-2016 SOIL TEST LOCATIONS
2 3-16-2016	CONTOURS, UTIL.	6 9-21-2016 ACCESS ESMT
3 3-28-2016	LOT SIZE	7 10-14-2016 REMOVE PP FEATURES
4 7-14-2016	BLD, PKG, SETBK, ESMT	



THE UNDERSIGNED CERTIFIES THAT THIS MAP WAS MADE FROM AN ACTUAL SURVEY ON 10-27-1987 VOID WITHOUT SIGNER'S ENGOSSED SEAL.

COTTRELL LAND SURVEYORS, P.C.
7308 JAMESVILLE ROAD
MANLIUS, N.Y. 13104 PHONE (315) 682-8121



1. LAUNDRY TRAY WASTES MUST BE SOLIDLY CONNECTED TO SOIL OR WASTE STACK.
2. SUMP FOR FOOTINGS AND FLOOR DRAINING MAY GROWTH. DISCHARGE BY AN APPROVED METHOD DETERMINED BY THE GOVERNING AUTHORITY REGULATING SURFACE DRAINAGE.
3. BASEMENT FLOOR IS TO BE PITCHED TOWARD THE FLOOR DRAIN OR SUMP.

PROPOSED "TYPICAL PLUMBING LAYOUT"
(WET SEWER CONNECTION)

I HEREBY APPROVE THIS TRACT MAP.

JOHN S. PENZOTTO
J.S. PENZOTTO REAL ESTATE, INC.
6886 CRYSTALWOOD DRIVE
LIVERPOOL, NY 13088

SUBDIVISION OF LAND

PLANNING BOARD CHAIRPERSON
TOWN OF MANLIUS

COUNTY HEALTH DEPARTMENT APPROVAL

#12323 - 2/9/2017